

EXECUTIVE GOLF HOME

185 - 51075 FALLS COURT

Chilliwack, BC, V4Z 1K7



\$1,149,000

Welcome to stunning panoramic views at this luxury home in Emerald Ridge at The Falls. This gated golfing community is all about lifestyle.

- * 3 Level Luxury home with Panoramic views
- * 6 Bedrooms + Den, 4 Full Bathrooms
- * 5871 SF house on 11,524 SF lot
- * 2 bedroom basement suite w/ separate entry
- * Refinished Hardwood flooring
- * New upgrades throughout
- * New high-end chef's Kitchen
- * New paint throughout
- * New Kitchen appliances in basement suite

Meryl Hamdillah
REALTOR

e: info@merylhamdillah.com
c: 604-307-9506
www.merylhamdillah.com

Sutton Group West Coast Realty
Office Locations: Metro Vancouver, Burnaby, Coquitlam

LISTED
with
www.Meryl.REALTOR



c: 604-307-9506
e: info@merylhamdillah.com



MERYL HAMDILLAH

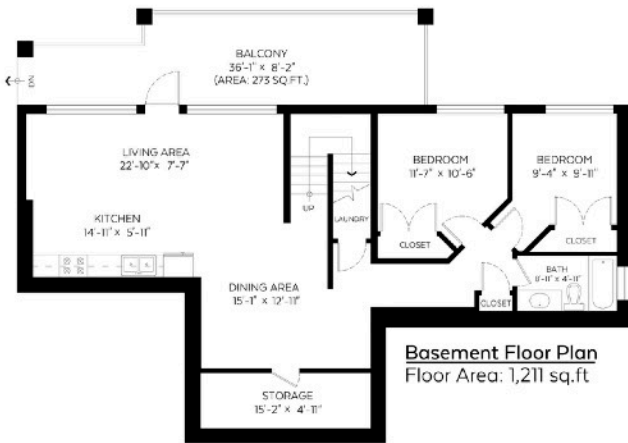
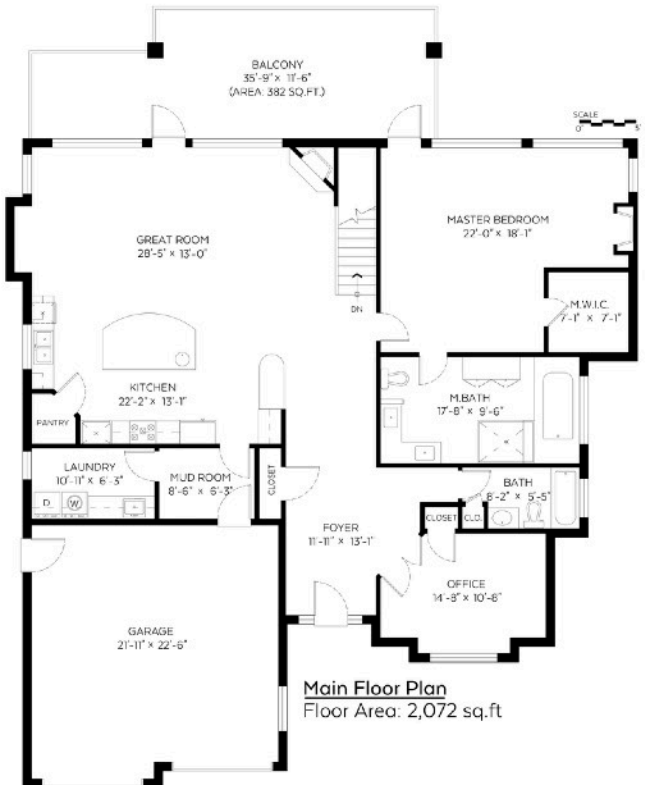
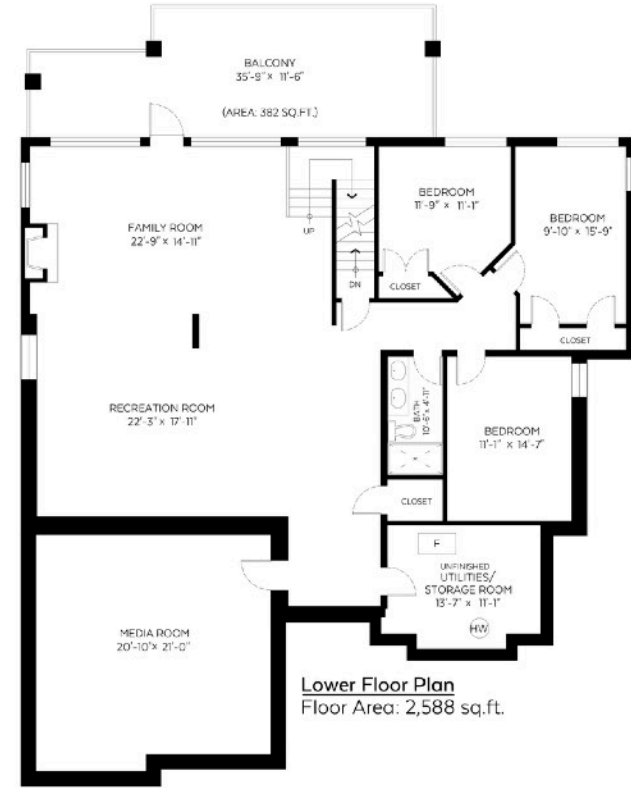
604.307.9506 info@merylhamdillah.com
Sutton Westcoast www.merylhamdillah.com

#185-51075 Falls Court,
Chilliwack, B.C.

Main Floor:	2,072 sq.ft.
Lower Floor:	2,588 sq.ft.
Basement Floor:	1,211 sq.ft.
Total:	5,871 sq.ft.

Auxiliary Area

Garage:	528 sq.ft.
Balconies:	1,037 sq.ft.



Measured on: May 23, 2018

The floor plan is not suitable for architectural/construction and is covered under E&O © Excelsior Measuring Inc. 2018. All rights reserved for Excelsior Measuring Inc. Users shall not publish and distribute such material (in whole or in part) and/or incorporate it in other works in any form.

