



# MERYL HAMDILLAH

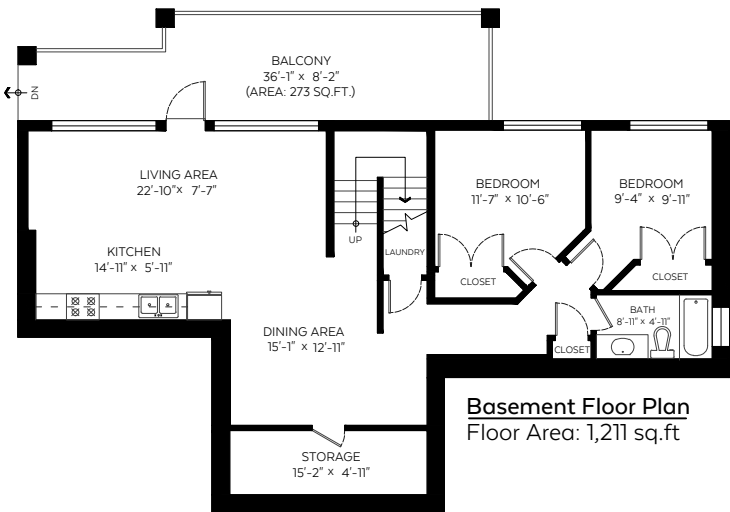
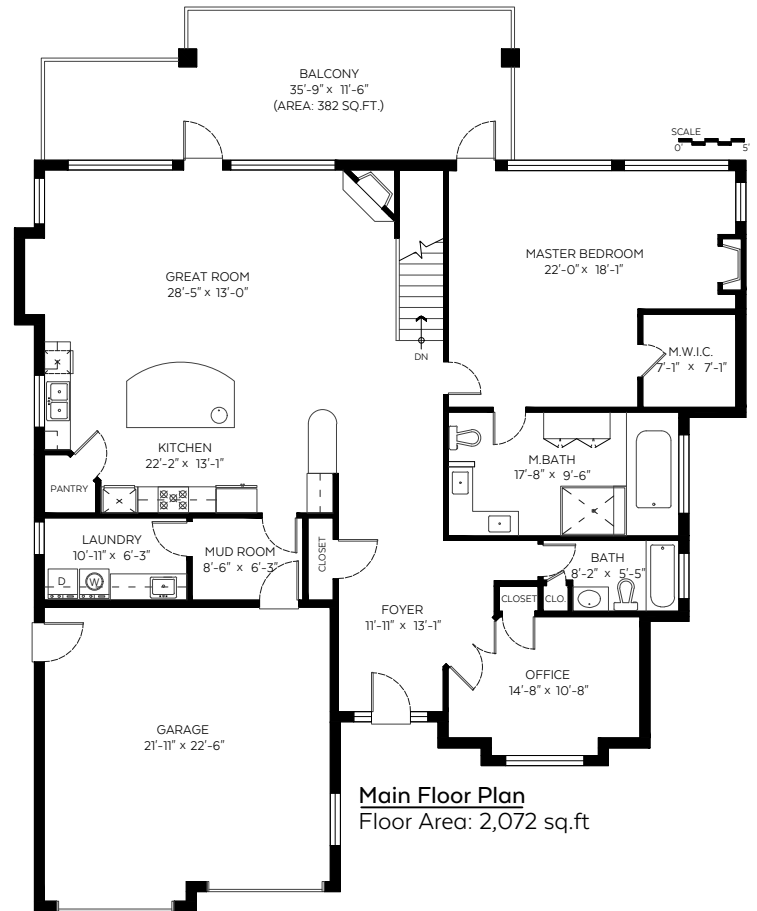
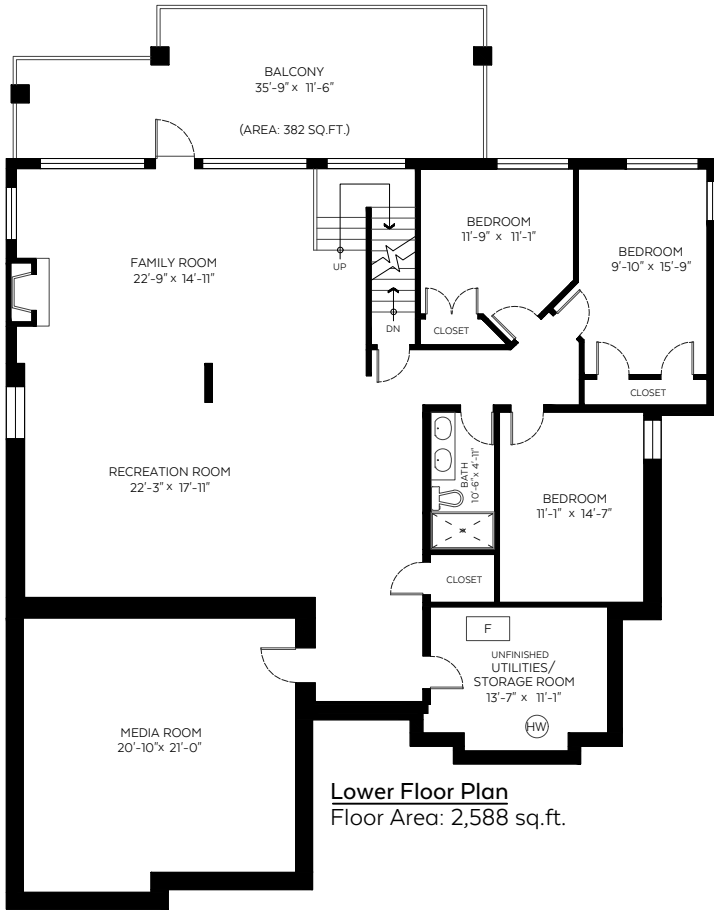
604.307.9506 info@merylhamdillah.com  
Sutton Westcoast www.merylhamdillah.com

#185-51075 Falls Court,  
Chilliwack, B.C.

Main Floor:	2,072 sq.ft.
Lower Floor:	2,588 sq.ft.
Basement Floor:	1,211 sq.ft.
<b>Total:</b>	<b>5,871 sq.ft.</b>

### Auxiliary Area

Garage:	528 sq.ft.
Balconies:	1,037 sq.ft.



The floor plan is not suitable for architectural/construction and is covered under E&O. © Excelsior Measuring Inc. 2018. All rights reserved for Excelsior Measuring Inc. Users shall not publish and distribute such material (in whole or in part) and/or incorporate it in other works in any form.



NORTH

