



MERYL HAMDILLAH

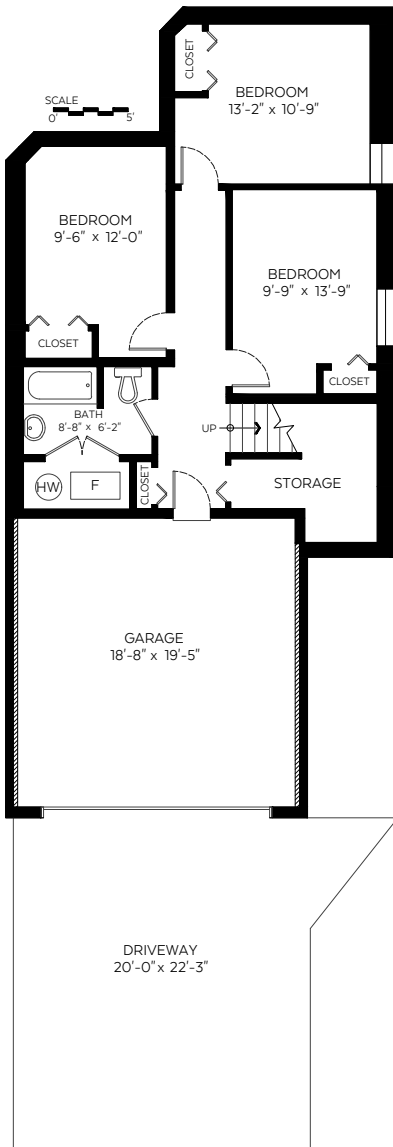
604.307.9506 info@merylhamdillah.com
www.merylhamdillah.com

#21-1705 Parkway Boulevard,
Coquitlam, B.C.

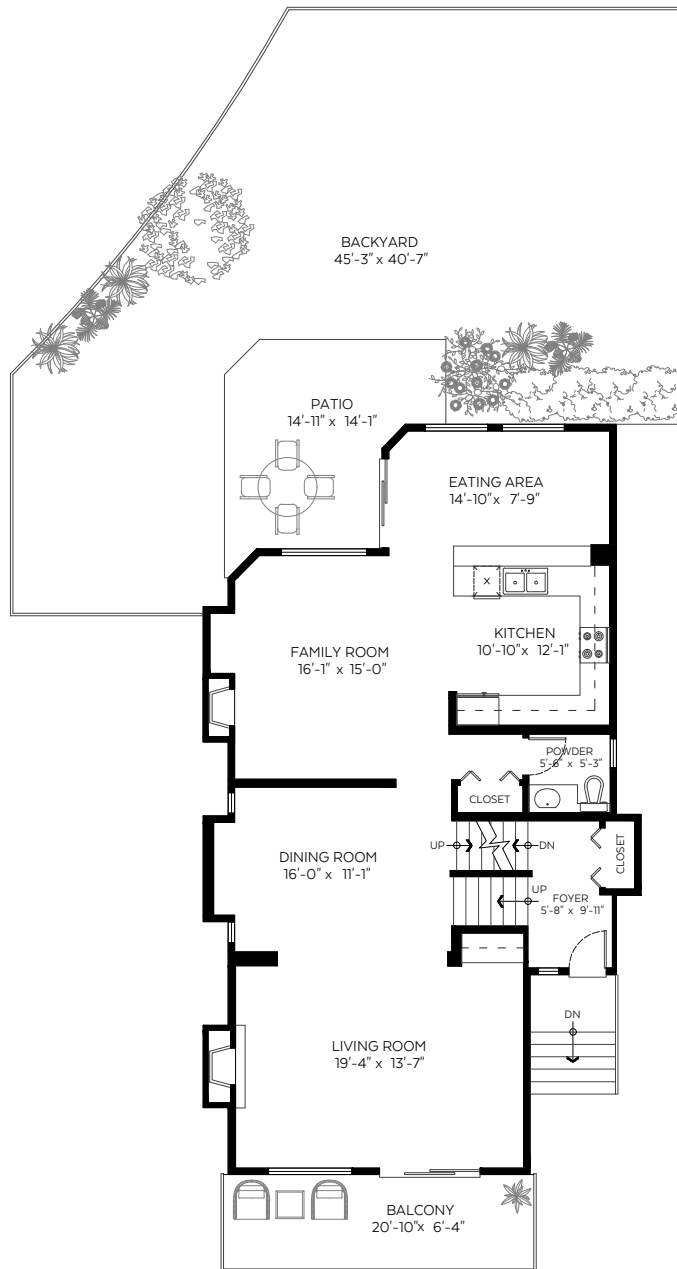
Main Floor:	1,178 sq.ft.
Upper Floor:	1,183 sq.ft.
Lower Floor:	825 sq.ft.
Total:	3,186 sq.ft.

Auxiliary Area

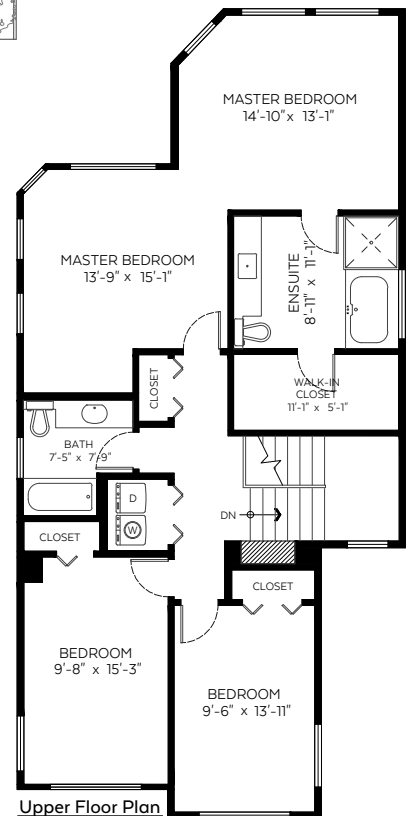
Garage:	407 sq.ft.
Driveway:	467 sq.ft.
Backyard/Patio:	1,285 sq.ft.
Balcony:	132 sq.ft.



Lower Floor Plan
Floor Area: 825 sq.ft.
Ceiling Height: 8 ft.



Main Floor Plan
Floor Area: 1,178 sq.ft.
Ceiling Height: 8.75 ft.



Upper Floor Plan
Floor Area: 1,183 sq.ft.
Ceiling Height: 8 ft.



Valid Until: July 26, 2022

The floor plan is not suitable for architectural/construction and is covered under E&O. © Excelsior Measuring Inc. 2019. All rights reserved for Excelsior Measuring Inc. Users shall not publish and distribute such material (in whole or in part) and/or incorporate it in other works in any form.



Booked on
the Pixlink App™

