

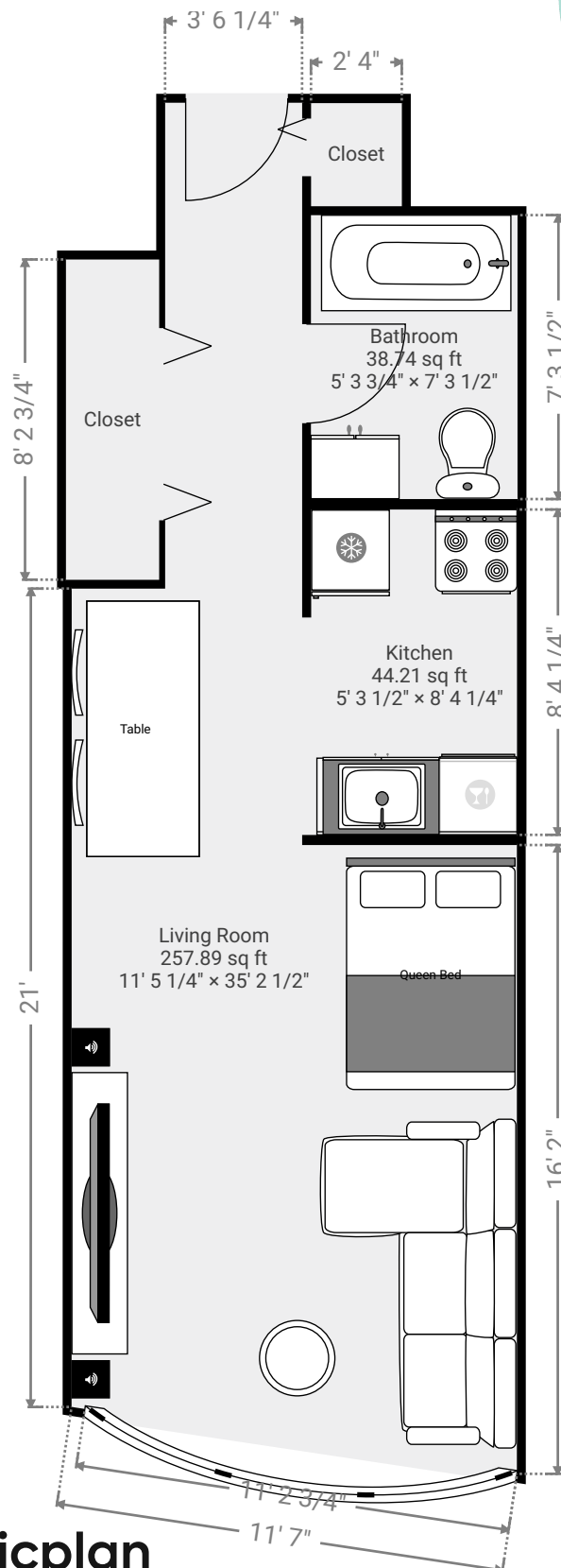
Queen's Court | Studio Condo

#504 - 3455 Ascot Pl, V5R 6B7 Vancouver, BC, Canada

*TOTAL AREA: 398 sq ft • ROOMS: 5



▼ 5th Floor

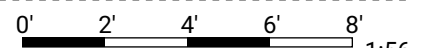


MEASURED BY



*TOTAL AREA includes measurements to the middle of walls.

THIS FLOORPLAN IS PROVIDED WITHOUT WARRANTY OF ANY KIND. SENSOPIA MAGICPLAN DISCLAIMS ANY WARRANTY. Buyer or Buyer's Agent should verify measurements if deemed important.



1:56

Page 1/4

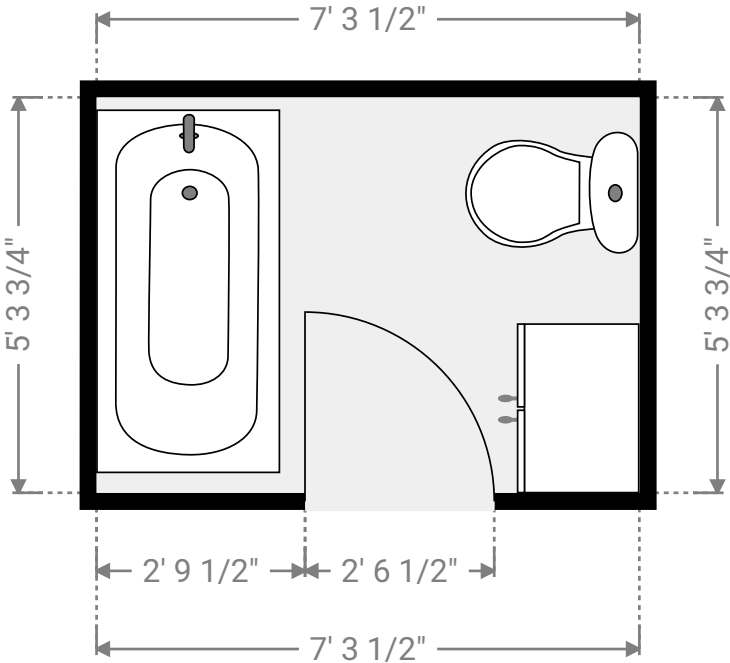
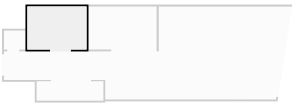
504 - 3455 Ascot Pl

504-3455 Ascot Pl, V5R 6B7 Vancouver, BC, Canada
TOTAL AREA: 398 sq ft • ROOMS: 5



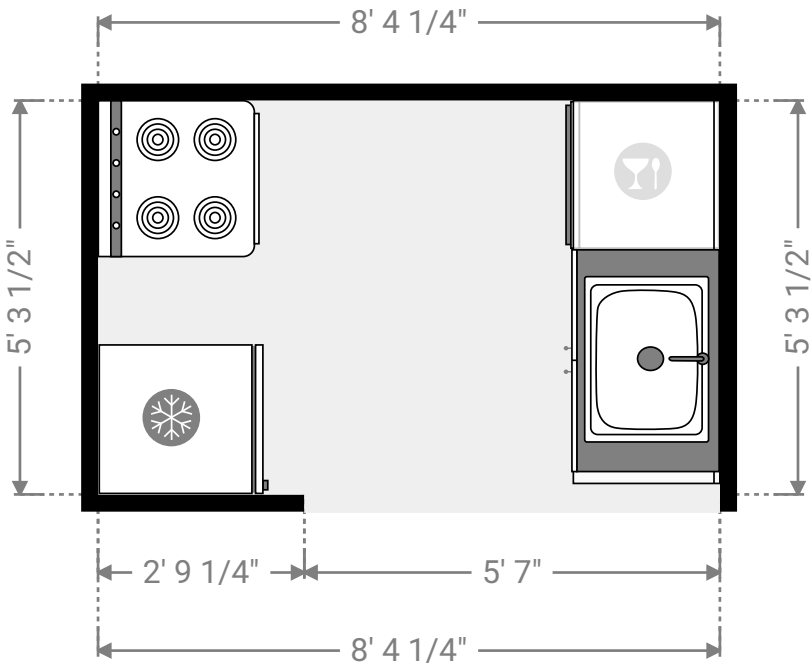
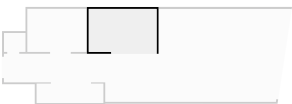
▼ Bathroom
Ground Floor

WIDTH: 7' 3 1/2" • LENGTH: 5' 3 3/4"
AREA: 38.74 sq ft • PERIMETER: 25' 2 1/2"



▼ Kitchen
Ground Floor

WIDTH: 8' 4 1/4" • LENGTH: 5' 3 1/2"
AREA: 44.21 sq ft • PERIMETER: 27' 3 1/2"



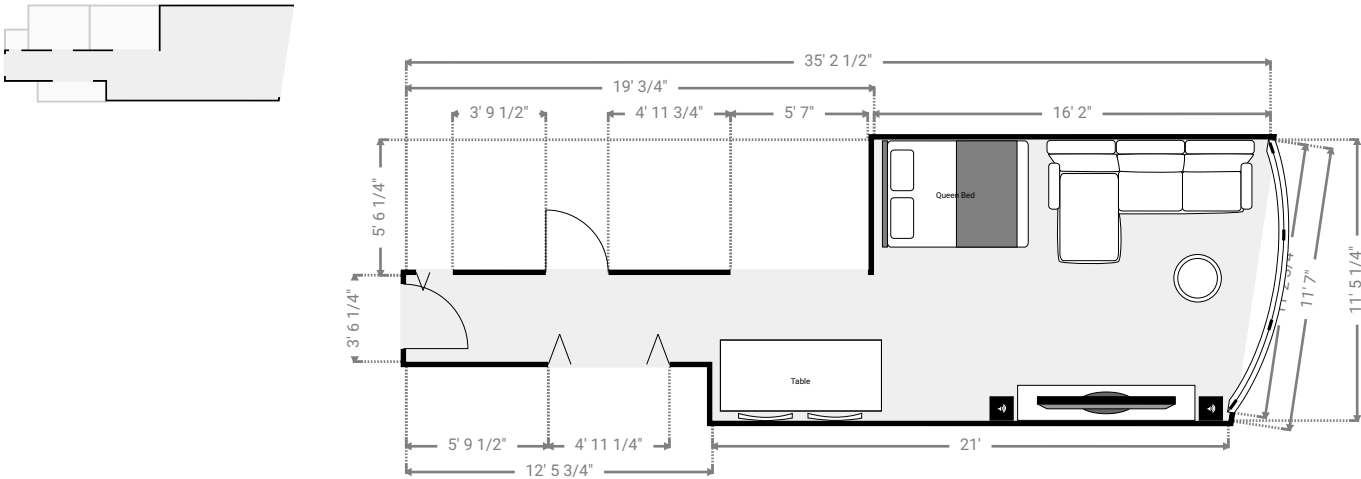
504 - 3455 Ascot Pl

504-3455 Ascot Pl, V5R 6B7 Vancouver, BC, Canada
TOTAL AREA: 398 sq ft • ROOMS: 5



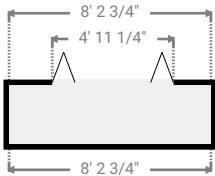
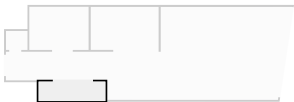
▼ Living Room Ground Floor

WIDTH: 35' 2 1/2" • LENGTH: 11' 5 1/4" • CEILING HEIGHT: 7' 10"
AREA: 257.89 sq ft • PERIMETER: 91' 8 3/4"



▼ Closet Ground Floor

WIDTH: 8' 2 3/4" • LENGTH: 2' 4 3/4"
AREA: 19.70 sq ft • PERIMETER: 21' 2 3/4"



504 - 3455 Ascot Pl

504-3455 Ascot Pl, V5R 6B7 Vancouver, BC, Canada
TOTAL AREA: 398 sq ft • ROOMS: 5



▼ Closet
Ground Floor

WIDTH: 2' 7 3/4" • LENGTH: 2' 4"
AREA: 6.17 sq ft • PERIMETER: 9' 11 1/2"

